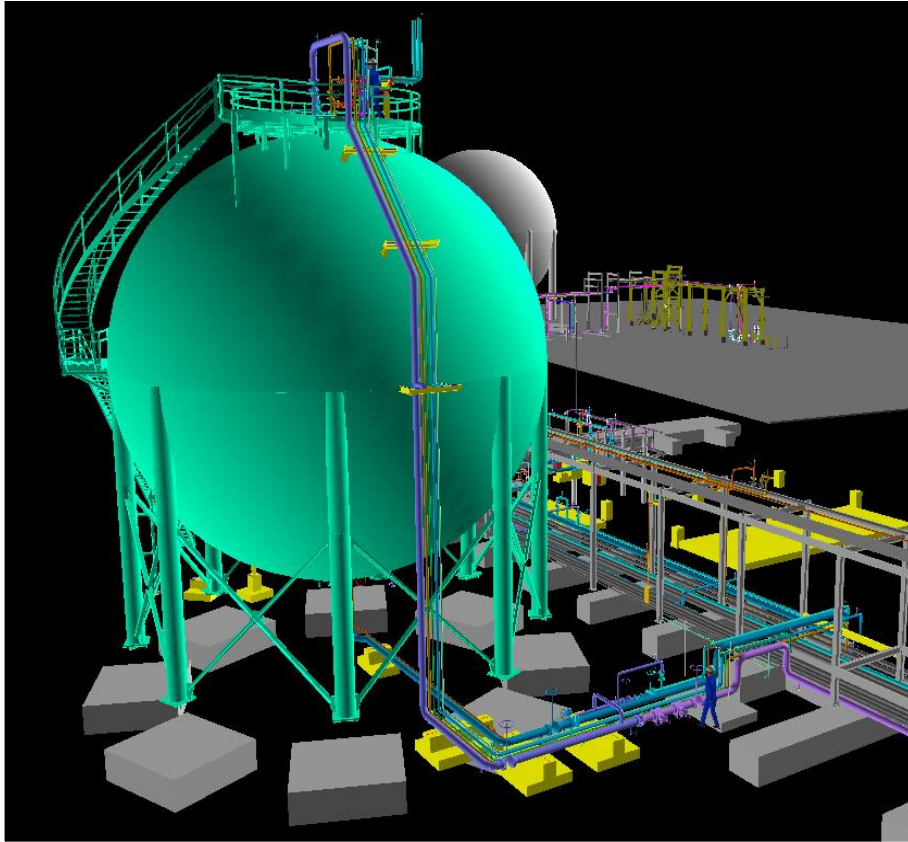


Normal Butane Project



Location: Norco, LA

Project Overview:

- 10,000 BBL Butane Sphere
- New Truck Loading Station
- Gasoline Blending Manifold
- API 610 Butane Transfer Pump
- Firewater System
- Triple-Redundant Triconex Safety System, DCS Master CPU with Associated Fiber Switches, DCS Remote Instrument Enclosure (RIE) for Integration into the Existing Plant Wide Foxboro DCS Fiber MESH System

Project Deliverables:

- Full Mechanical, Civil, Structural, Electrical and Instrumentation Design Packages
- Terminal Hydraulics, Pipe Stress Analysis and Equipment Specification
- Drainage Analysis / Grading Plans / Foundation Plans
- Control System Narrative, Power Studies, and Photometric Studies
- PSV Studies
- HAZOP and Operability Reviews
- Commissioning and Start-Up Assistance